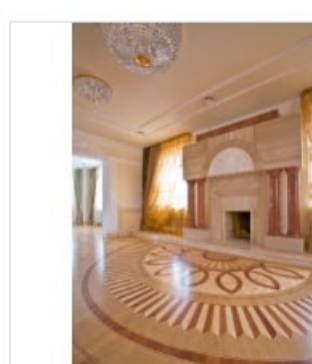
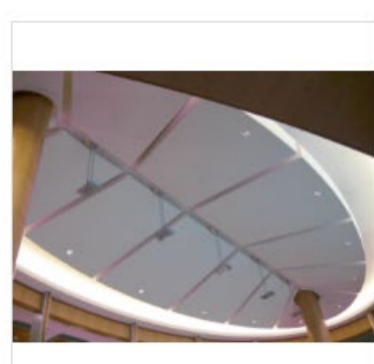


## Ornementation architecturale

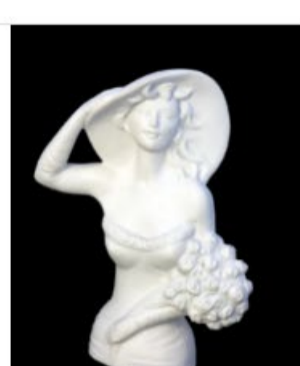


Plâtre pour matrice USG Enduracast<sup>MC</sup>



USG Hydrocal<sup>MD</sup> FGR 95 et Hydrocal<sup>MD</sup> FGR 115

## Art & sculpture



USG Hydrocal<sup>MD</sup> pour la sculpture



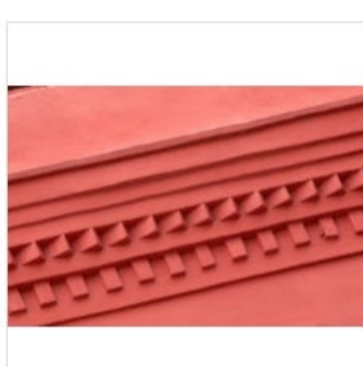
Plâtre de gypse blanc USG Hydrocal<sup>MD</sup>



Plâtre dur USG Hydro-Stone<sup>MD</sup>



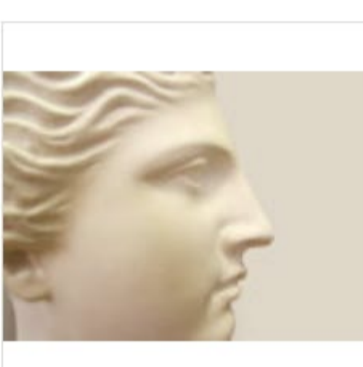
Plâtre à mouler USG Tuf-Cal<sup>MC</sup> pour la sculpture



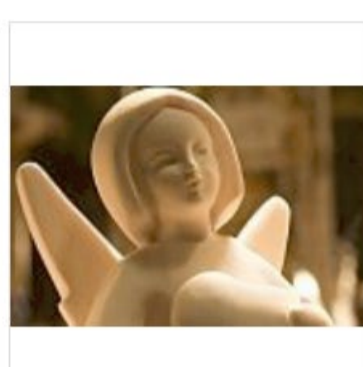
Plâtre à mouler No 1 USG



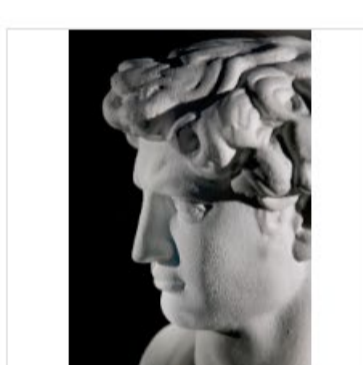
Plâtres à modeler/mouler USG



Plâtre blanc pour moulage d'art USG



Plâtre dur USG Tuf-Stone<sup>MC</sup>



Support de coulage USG Drystone<sup>MC</sup>

## Céramique



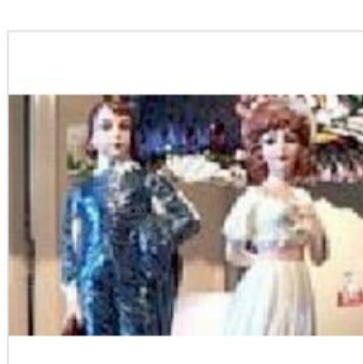
Plâtre dur USG Cerami-Cal<sup>MD</sup>



Plâtre à poterie USG Duramold<sup>MC</sup>



Plâtre à poterie USG Puritan<sup>MD</sup>



Plâtre à poterie No 1 USG



Plâtre à poterie tout usage USG

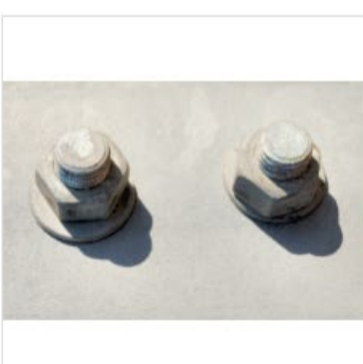
## Remplissage (ciments & plastiques)



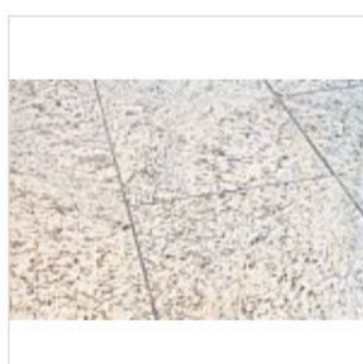
Agent de remplissage de sulfate de calcium USG CA-5<sup>MC</sup>



Agent de remplissage de sulfate de calcium USG CAS-20<sup>MD-4</sup>

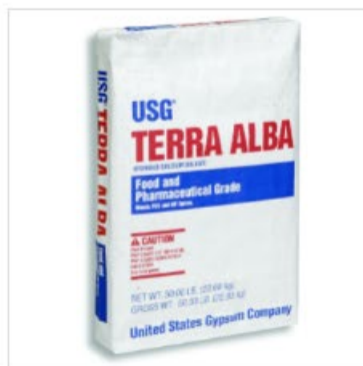


Agent de remplissage USG Industriel No 1



Sulfate de calcium USG Terra Alba No 1

## Remplissage (aliments & pharmacie)

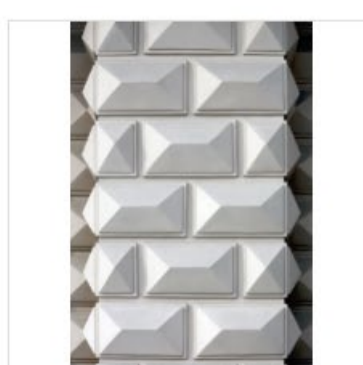


Sulfate de calcium USG Terra Alba F&P

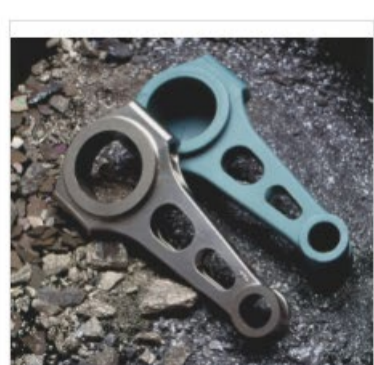


Agent de remplissage de sulfate de calcium USG Snow White<sup>MD</sup>

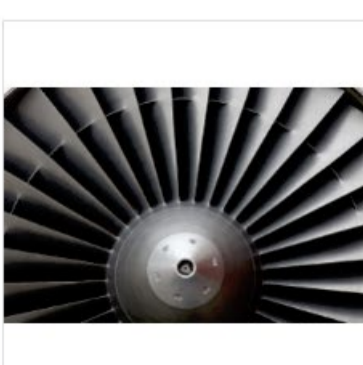
## Matériaux (usinage & prototypage)



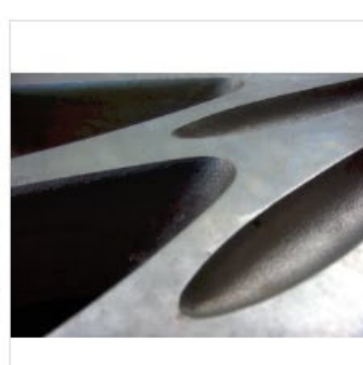
Plâtre dur USG Hydrocal<sup>MD</sup> A-11<sup>MD</sup>



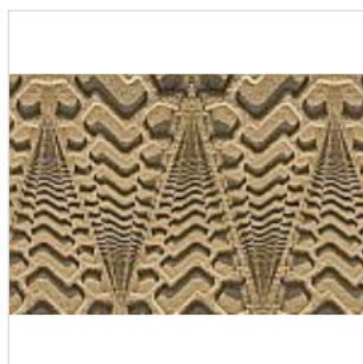
Plâtre dur USG Hydrocal<sup>MD</sup> B-11<sup>MD</sup>



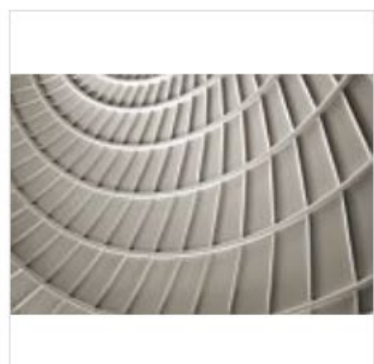
Ciment expansif USG Hydrocal<sup>MD</sup>



Plâtre de fonderie USG Hydroperm<sup>MD</sup>



Plâtre dur USG Ultra<sup>MD</sup> 30



Plâtre dur USG Ultra<sup>MD</sup> 60



Plâtre de fonderie USG